

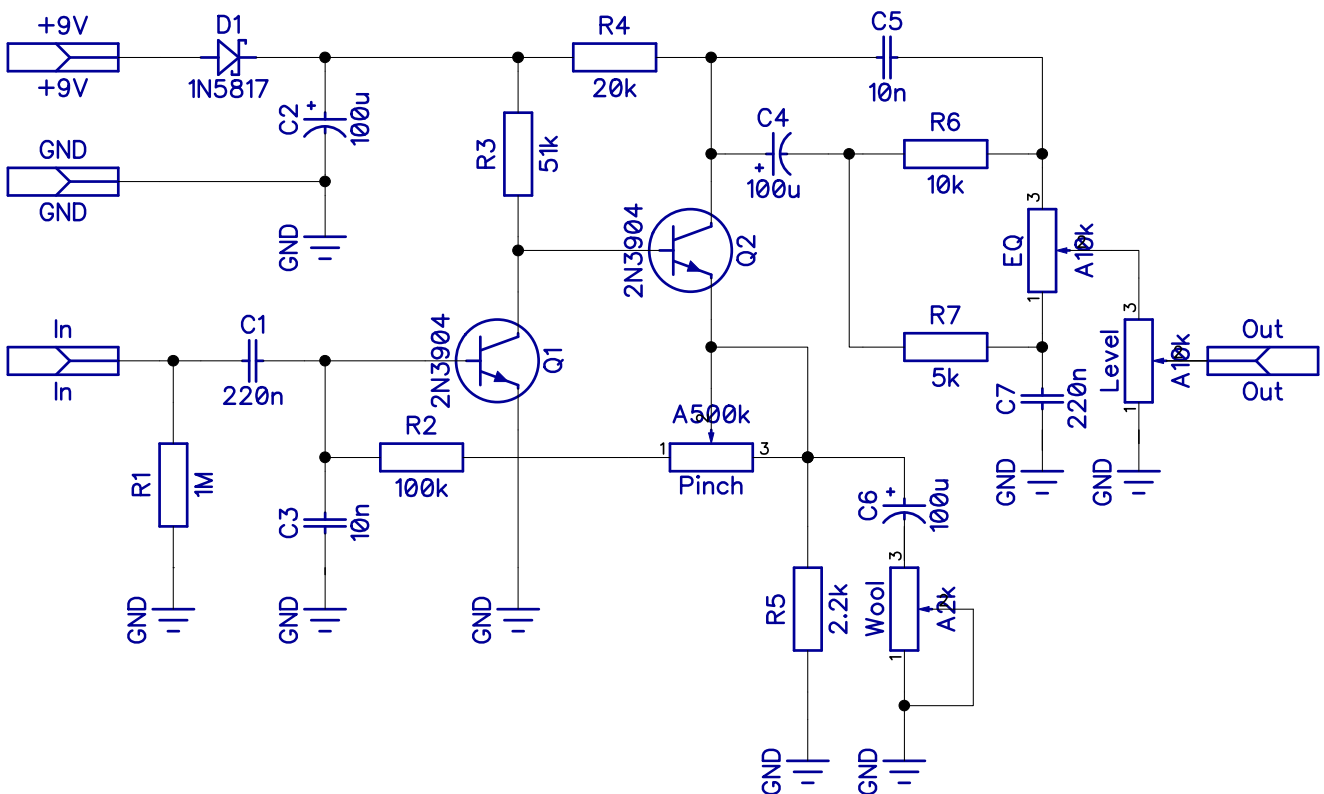


# Paleo Fuzz

Based on Zvex Woolly Mammoth  
PCB artwork ©2017 drdFX  
Release date: 2017. 07. 27.

**Paleo Fuzz is an NPN Si Fuzz Face derivative based on Zvex Woolly Mammoth. It is a higher gain, creamy fuzz with lots of bass, more suited for bass, but can be used on guitars as well.**

## SCHEMATIC

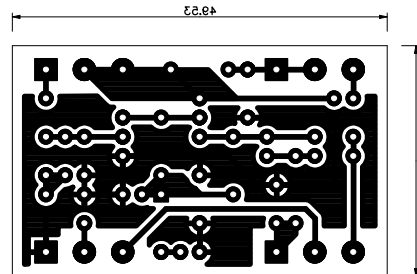
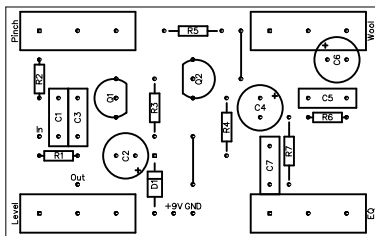


BOM							
Resistors		Capacitors		Semiconductors		Others	
R1	1M	C1	220n	D1	1N5817	EQ	A10k
R2	100k	C2	100u	Q1	2N3904	Level	A10k
R3	51k	C3	10n	Q2	2N3904	Pinch	A500k
R4	20k	C4	100u			Wool	A2k
R5	2.2k	C5	10n				
R6	10k	C6	100u				
R7	5k	C7	220n				

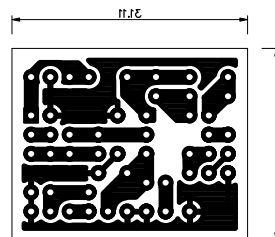
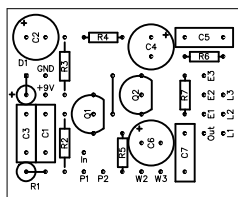
## LAYOUT

This effect can be built in 1590B and 1590A size.

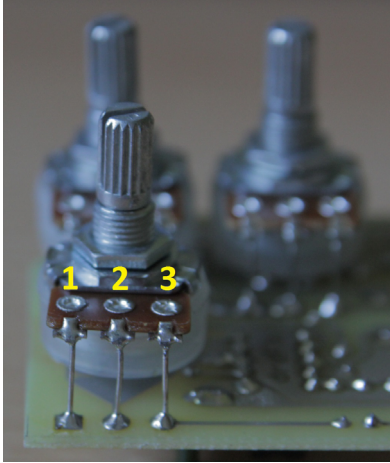
1590B



1590A



## NOTES



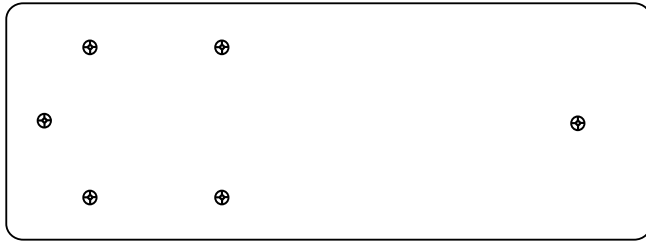
The pots are board mounted to the bottom of the board. The square pads mark the lug 1, for the numbering of the lugs see the picture. The smaller version has simple pads for connecting the pots with wires, this one can even be built into a 1590A enclosure. The numbering is the same as on the picture.

You can experiment with different transistor types, crucial is the bias of the transistor Q1. The resistor R3 needs to be changed, but in my experience the 51k value is ok for most common transistor types.

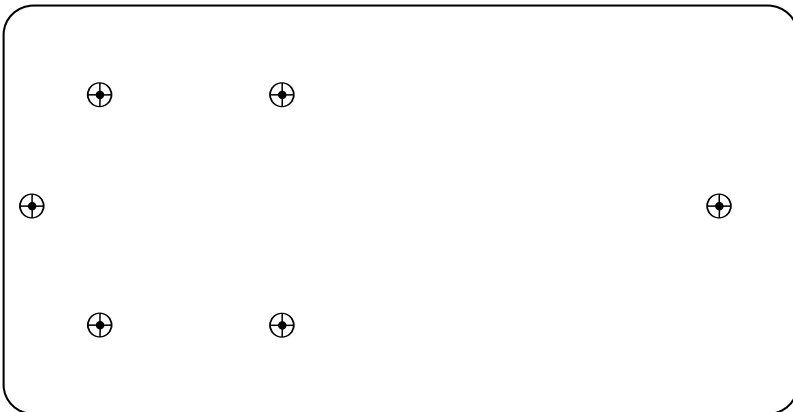
You can alternatively substitute this resistor with a pot or trimmer and even put it on the box, but I have found little use of this. In that case make sure you have a fixed resistor in series with the pot to avoid frying the transistor, the value can be around 1k.

## DRILLING TEMPLATES

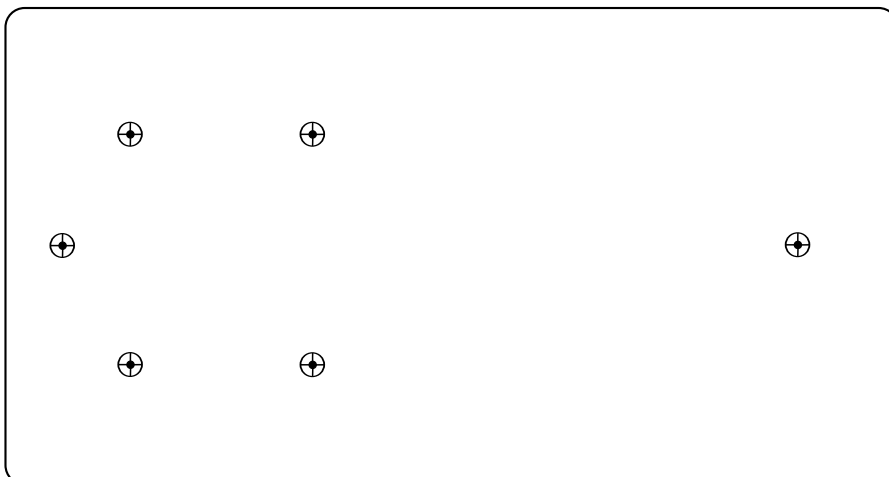
This effect has a smaller version that fits 1590A and a larger version that is meant for 1590B or if you prefer the additional space then 125B. Here are the drilling templates for them:



1590A



1590B



125B