

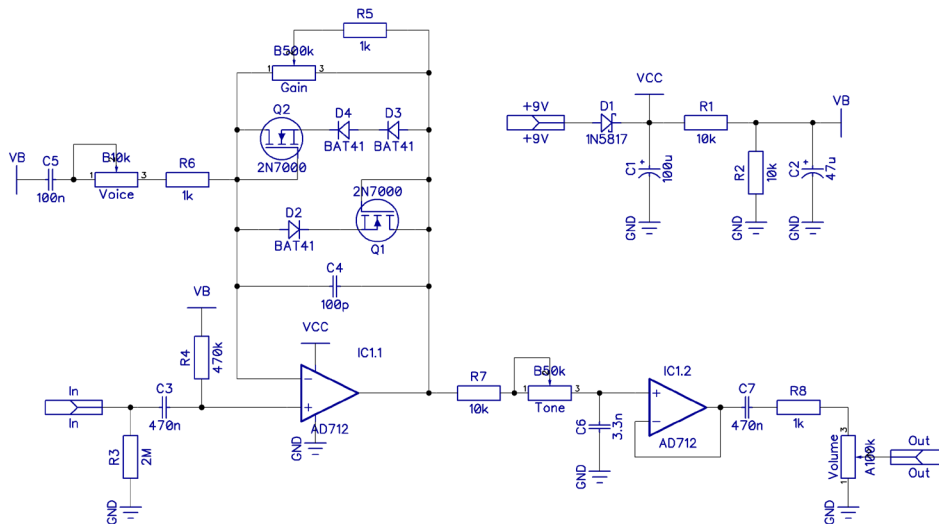


# Ommm...

Based on The Hermida ZenDrive  
PCB artwork ©2015 drdFX  
Release date: 2015.05.12

The Ommm... is a nice low to mid gain overdrive with plenty of useful settings. The schematic is an exact copy of the Hermida ZenDrive with added polarity protection.

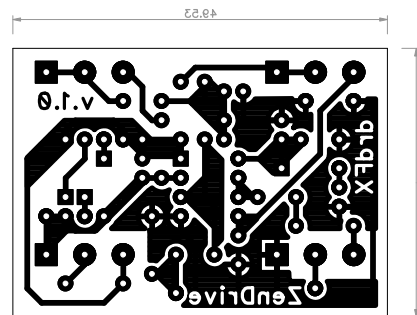
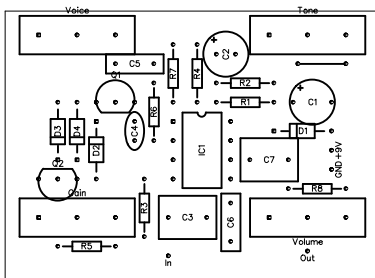
## SCHEMATIC



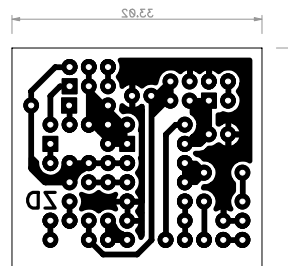
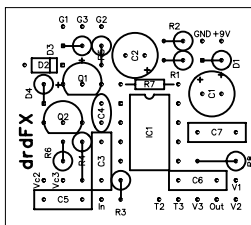
# LAYOUT

Print out the PCB design without any resizing options and make sure you switch off the "fit to page" option. The design is free for personal/home use and you also may build one or two for your friends, but the PCB layout is my artwork, therefore protected by copyright and is not permitted to be used for commercial purposes.

1590B layout



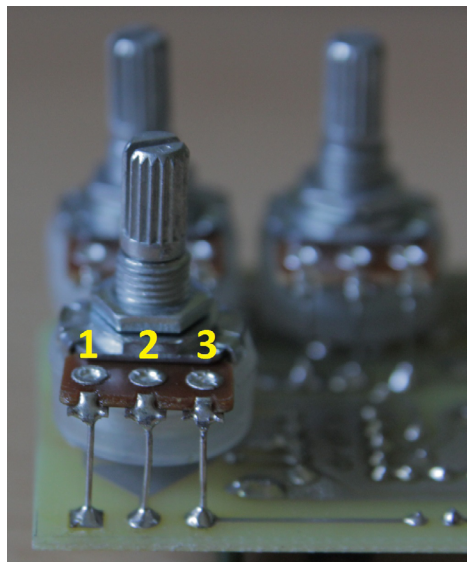
1590A layout



BOM							
Resistors		Capacitors		Semiconductors		Others	
R1	10k	C1	100u	D1	1N5817	Volume	A100k
R2	10k	C2	47u	D2	BAT41	Voice	B10k
R3	2M	C3	470n	D3	BAT41	Gain	B500k
R4	470k	C4	100p	D4	BAT41	Tone	B50k
R5	1k	C5	100n	IC1	AD712		
R6	1k	C6	3.3n	Q1	2N7000		
R7	10k	C7	470n	Q2	2N7000		
R8	1k						

## NOTES

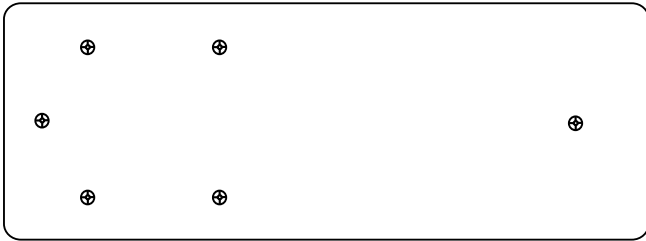
The pots are board mounted to the bottom of the board. The square pads mark the lug 1, for the numbering of the lugs see the picture below:



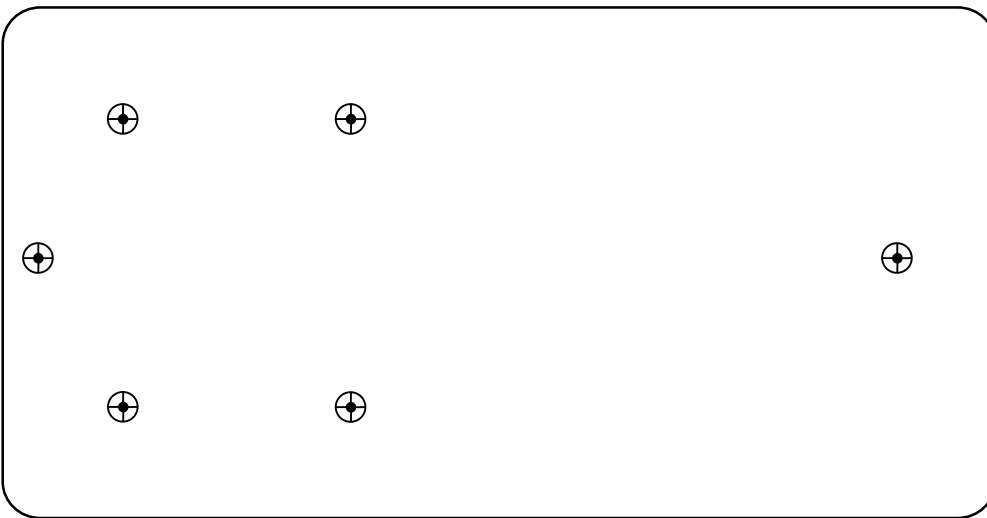
You can use either the PCB mounted pots that have long lugs or solder some stronger solid wire pieces to the lugs of the standard pots. I prefer the latter because then you can control the height of your pot better. This is nice especially if you have switches too in your design, because this way you can align the pot height with the height of the switch.

## DRILLING TEMPLATES

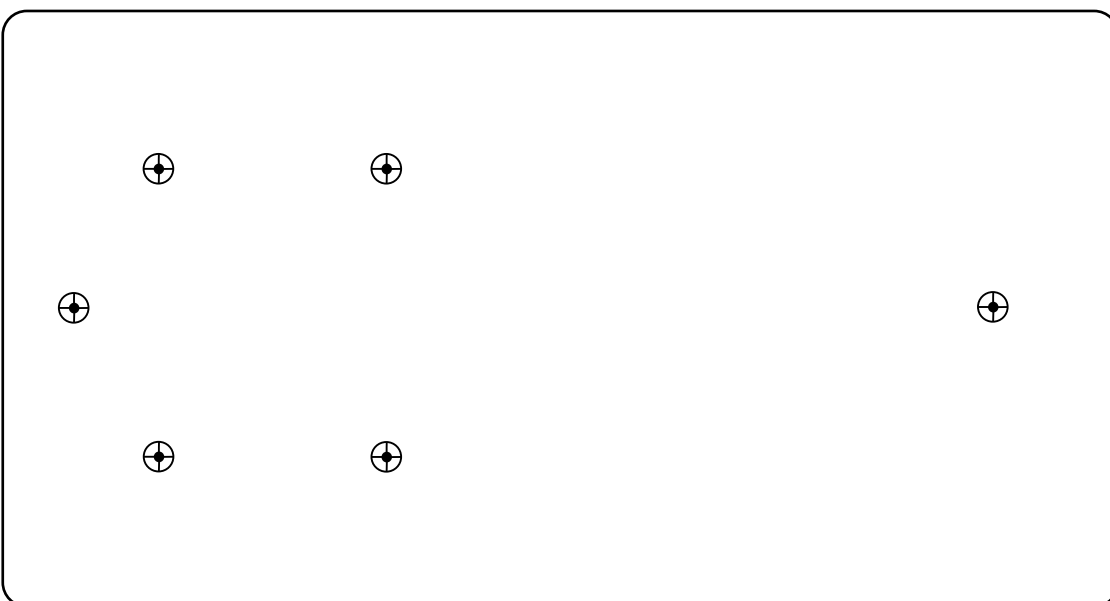
Here are three templates for the top of the box for the various box sizes. The larger design fits in both 1590B and 125B, however if you are less experienced you may find the 125B enclosure easier to work with.



1590A



1590B



125B