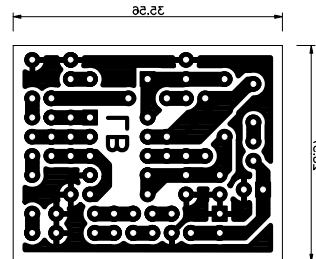
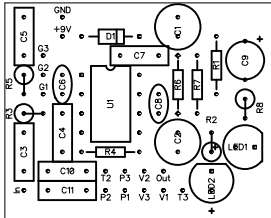


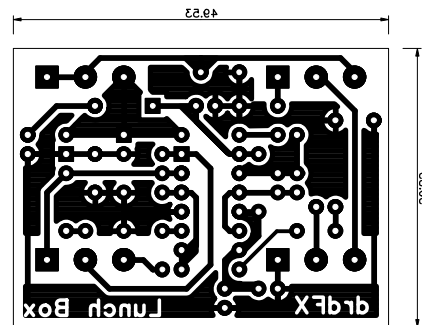
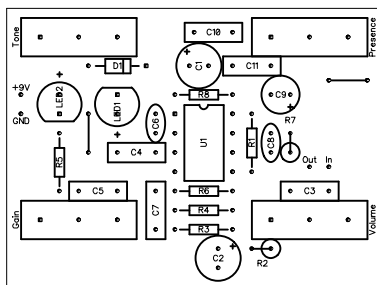
LAYOUT

This effect can be built in both the 1590A and the 1590B/125B size. Print out without any resizing options. The PCB layout is under copyright, it is free for personal use and you may also build one or two for your friends, but commercial usage is prohibited.

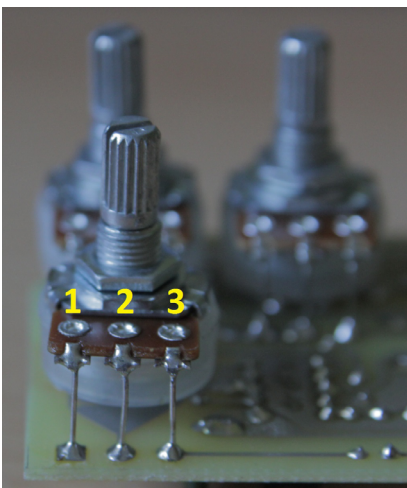
1590A



1590B



NOTES

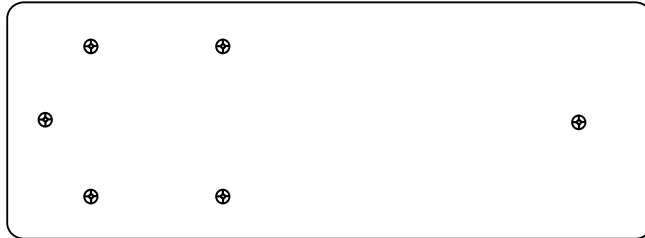


The pots are board mounted to the bottom of the board. The square pads mark the lug 1, for the numbering of the lugs see the picture. Since the part number is quite low it is possible to build the effect into a 1590A box too. That version however has simple pads for connecting the pots with wires. The numbering is the same as on the picture.

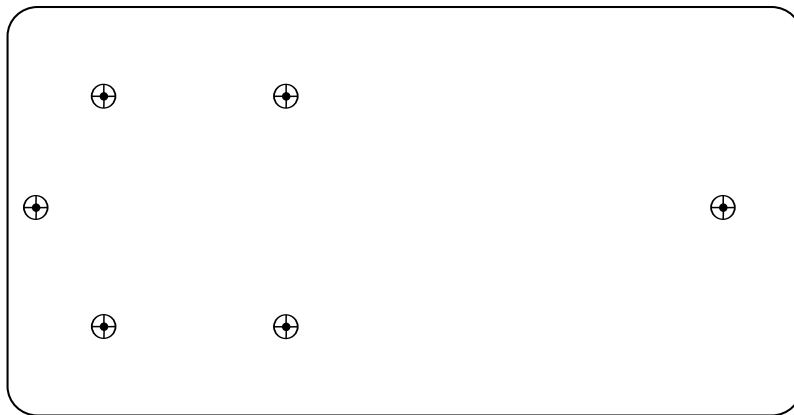
BOM							
Resistors		Capacitors		Semiconductors		Others	
R1	22k	C1	100u	D1	1N5817	Gain	B100k
R2	22k	C2	100u	LED1	5mm red	Presence	B20k
R3	1k	C3	22n	LED2	5mm red	Tone	C10k
R4	1M	C4	1n	U1	LM833	Volume	A100k
R5	1k	C5	220n				
R6	10k	C6	100p				
R7	1M	C7	100n				
R8	470R	C8	100p				
		C9	2.2u				
		C10	22n				
		C11	22n				

DRILLING TEMPLATES

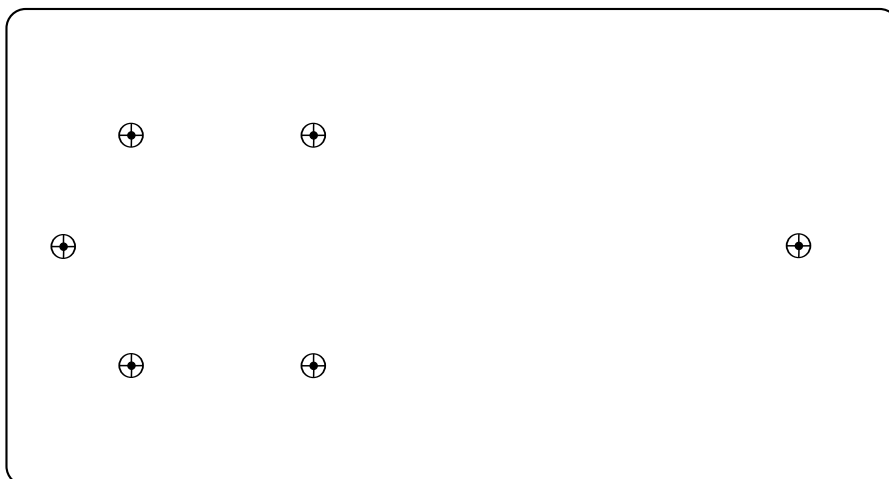
This effect has a smaller version that fits 1590A and a larger version that is meant for 1590B/125B. Here are the drilling templates for them:



1590A



1590B



125B