



Grizzly

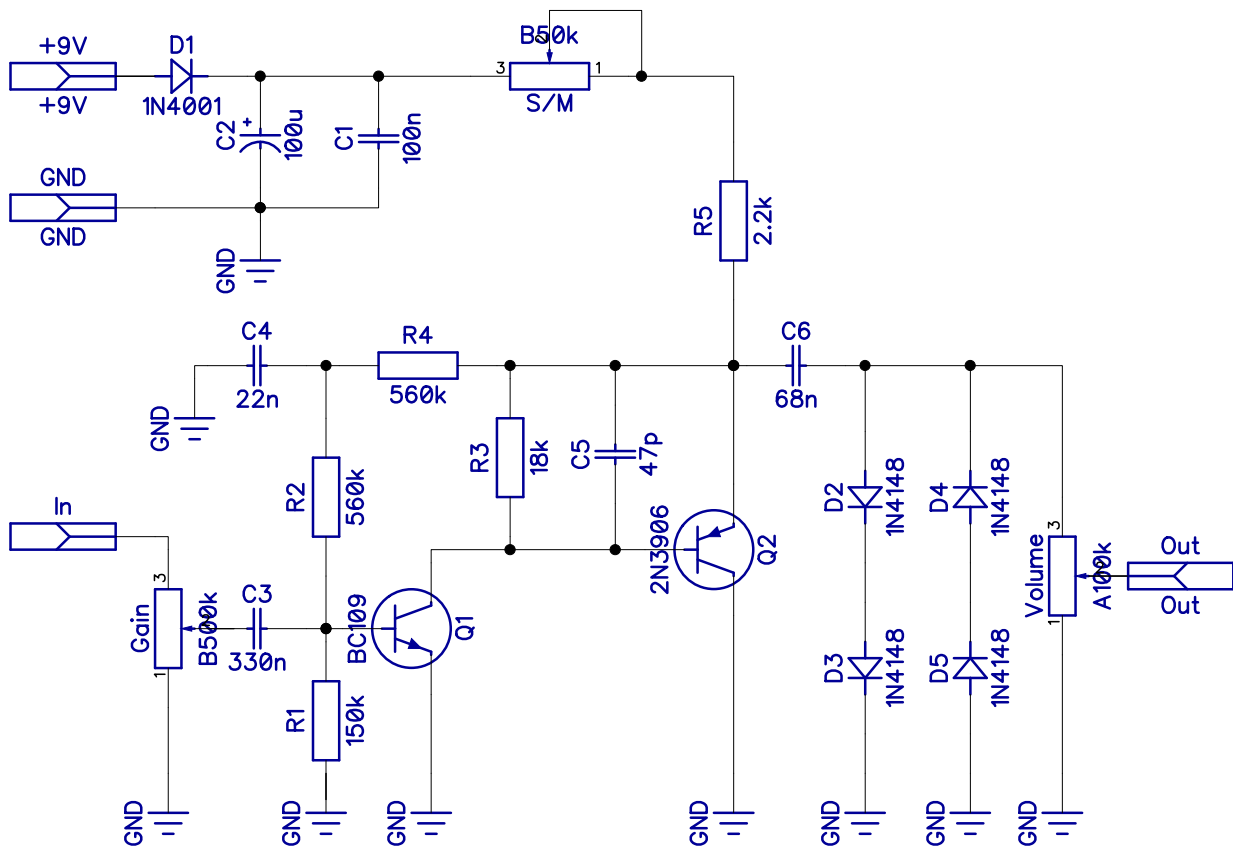
Based on KMA Fuzzly Bear

PCB artwork ©2019 drdFX

Release date: 2019. 06. 21.

Grizzly is a clone of KMA's Fuzzly Bear.

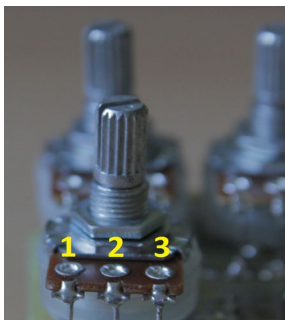
SCHEMATIC



BOM

Resistors		Capacitors		Semiconductors		Others	
R1	150k	C1	100n	D1	1N4001	Gain	B500k
R2	560k	C2	100u	D2	1N4148	S/M	B50k
R3	18k	C3	330n	D3	1N4148	Volume	A100k
R4	560k	C4	22n	D4	1N4148		
R5	2.2k	C5	47p	D5	1N4148		
		C6	68n	Q1	BC109		
				Q2	2N3906		

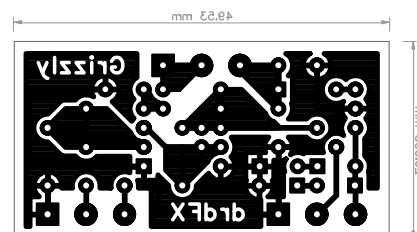
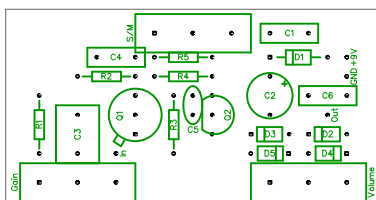
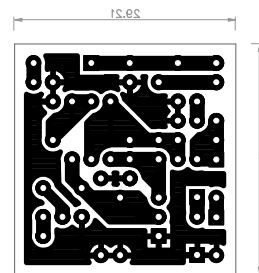
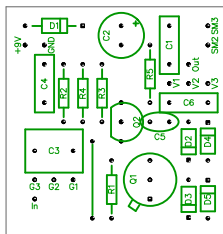
NOTES



On the large layout all pots are board mounted. The square pad marks the lug 1, for the numbering of the lugs see the picture. The smaller layout uses off-board wiring for all pots.

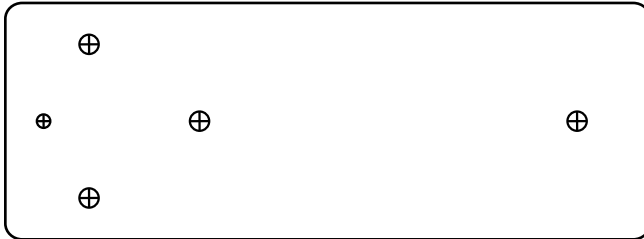
LAYOUT

Print out the PCB design without any resizing options and make sure you switch off the “fit to page” option. The design is free for personal/home use and you also may build one or two for your friends, but the PCB layout is my artwork, therefore protected by copyright and is not permitted to be used for commercial purposes. The smaller layout fits into a 1590A, the larger one can be mounted with the pots and fits 1590B or 125B.

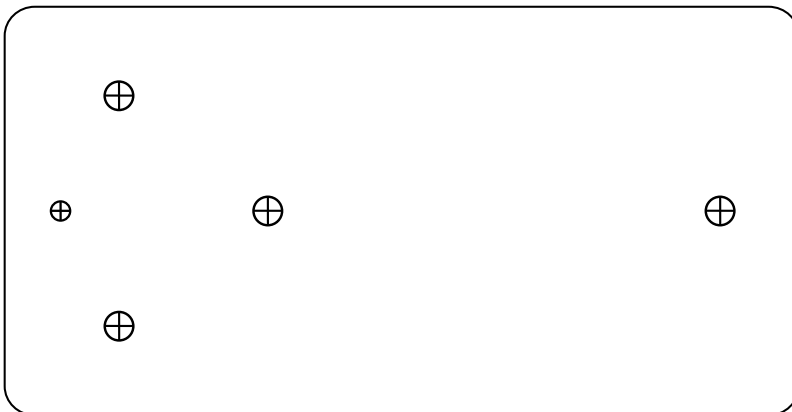


DRILLING TEMPLATES

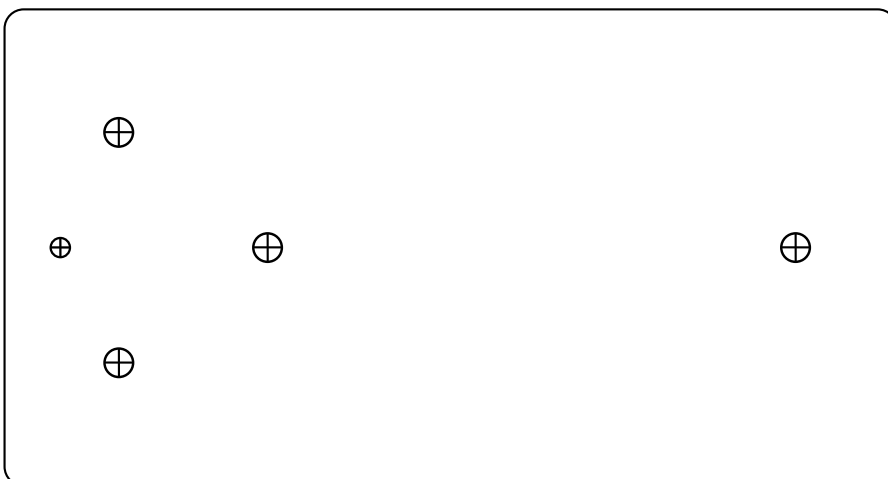
Here are three templates for the top of the box for the various box sizes. The design fits in both 1590B and 125B, however if you are less experienced you may find the 125B enclosure easier to work with. With careful measurement and low profile parts even the large layout might fit into the small 1590A enclosure as well, the small layout surely does.



1590A



1590B



125B