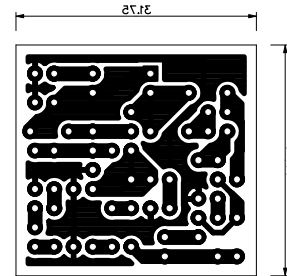
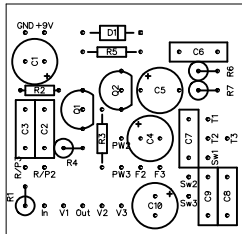


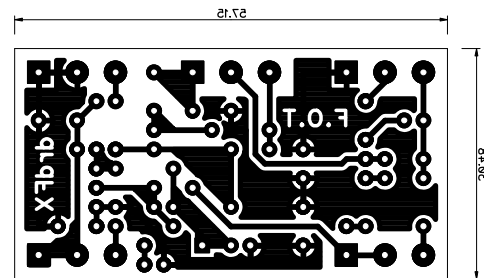
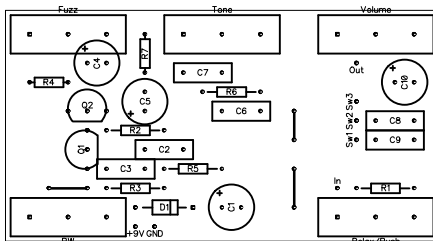
LAYOUT

This effect can be built in 1590B and 125B size.

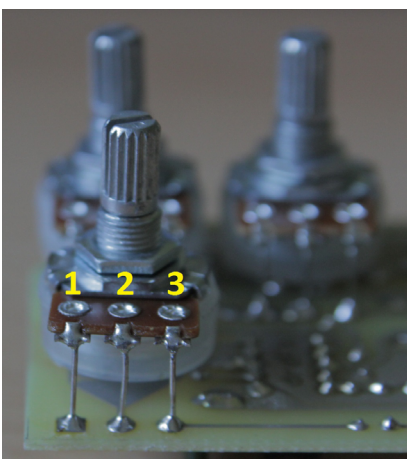
1590B



1250B



NOTES



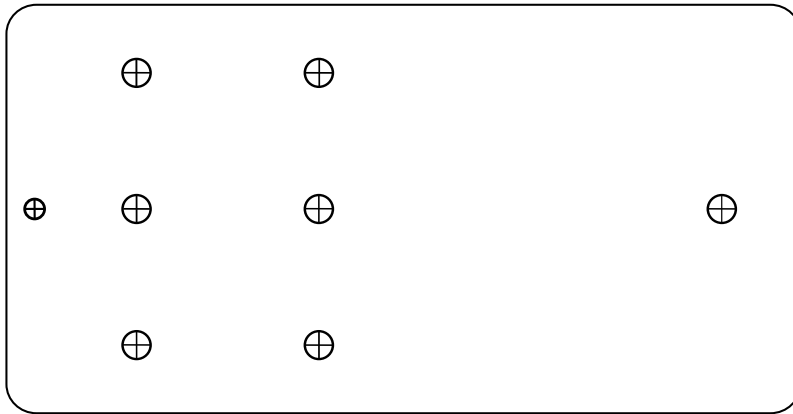
The pots are board mounted to the bottom of the board. The square pads mark the lug 1, for the numbering of the lugs see the picture. Though the part number is quite low, due to the number of pots it is possible to build the effect into a 125B box with board mounted pots or to a 1590B box with wired pots. The smaller version has simple pads for connecting the pots with wires. The numbering is the same as on the picture. You can experiment with different transistor types, crucial is the bias of the transistor Q1.

The resistor R2 needs to be changed, but in my experience the 56k value is ok for most common transistor types. You can alternatively substitute this resistor with a pot or trimmer and even put it on the box, but I have found little use of this. In that case make sure you have a fixed resistor in series with the pot to avoid frying the transistor, the value can be around 1k.

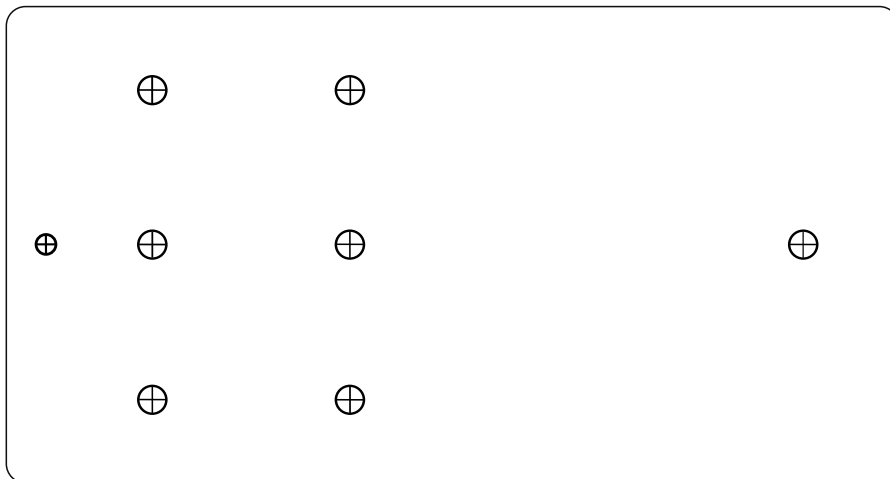
BOM							
Resistors		Capacitors		Semiconductors		Others	
R1	100R	C1	100u	D1	1N5817	Fuzz	C5k
R2	56k	C2	220n	Q1	2N2222A	PW	B500k
R3	100k	C3	10n	Q2	2N2222A	Relax/Push	B100k
R4	2.2k	C4	100u			Tone	B10k
R5	22k	C5	100u			Volume	B10k
R6	10k	C6	10n			Deep	SPDT
R7	5.1k	C7	220n				
		C8	33n				
		C9	68n				
		C10	100u				

DRILLING TEMPLATES

This effect has a smaller version that fits 1590B and a larger version that is meant for 125B. Here are the drilling templates for them:



1590B



125B