

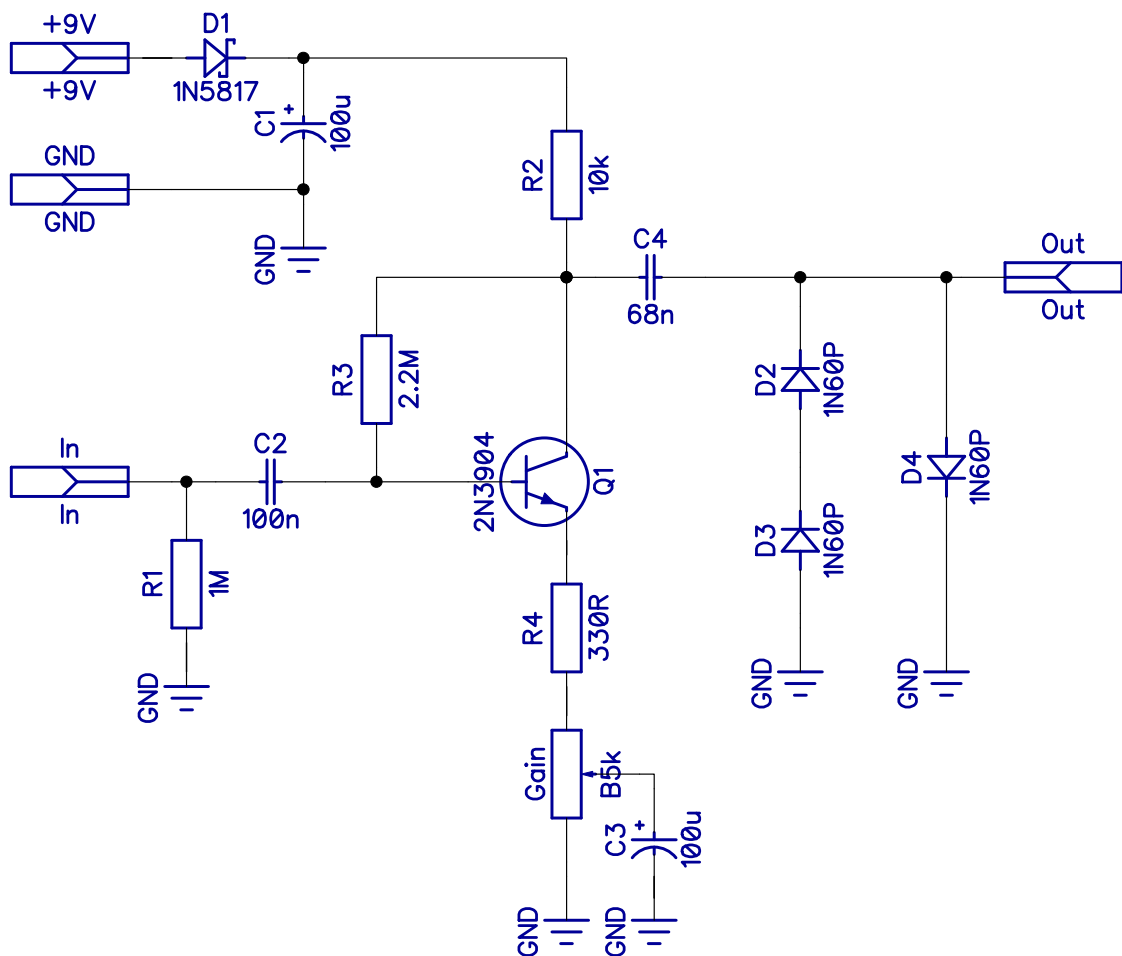


Crank It!

Based on Earthquaker Devices Speaker Cranker
 PCB artwork ©2015 drdFX
 Release date: 2015.09.03.

Crank It! is a dirty booster clone of the Earthquaker Devices Speaker Cranker.

SCHEMATIC

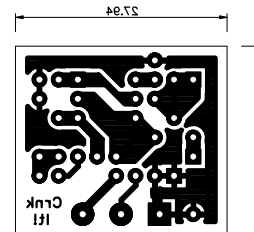
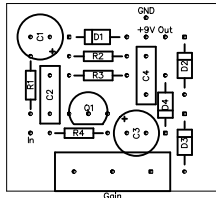


BOM

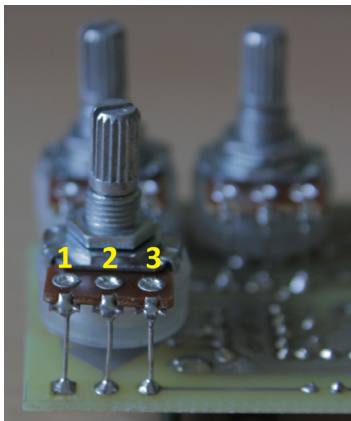
Resistors		Capacitors		Semiconductors		Others	
R1	1M	C1	100u	D1	1N5817	Gain	B5k
R2	10k	C2	100n	D2	1N60P		
R3	2.2M	C3	100u	D3	1N60P		
R4	330R	C4	68n	D4	1N60P		
				Q1	2N3904		

LAYOUT

Print out the PCB design without any resizing options and make sure you switch off the "fit to page" option. The design is free for personal/home use and you also may build one or two for your friends, but the PCB layout is my artwork, therefore protected by copyright and is not permitted to be used for commercial purposes.



NOTES



The pots are board mounted to the bottom of the board. The square pads mark the lug 1, for the numbering of the lugs see the picture. Since the part number is quite low it is possible to build the effect into a 1590A box too.

DRILLING TEMPLATES

Here is a drilling template for the smallest possible box for this project, the 1590A.



1590A